

# TOTOKU

## ME Series

5mega pixel 21.3" monochrome LCD

# ME511L

ME511L/C (clear base), ME511L/B (blue base)

21.3"

Monochrome  
liquid crystal  
panel

Digital  
Input

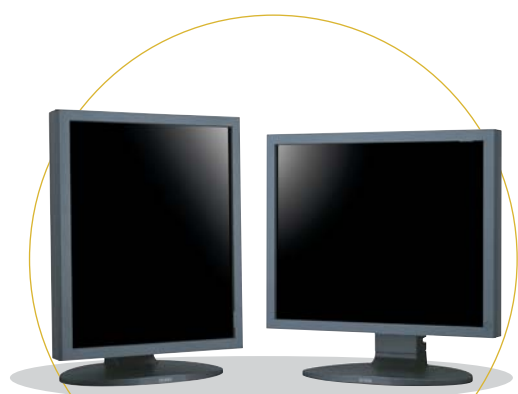
2560  
×  
2048

High  
luminance  
750cd/m<sup>2</sup>

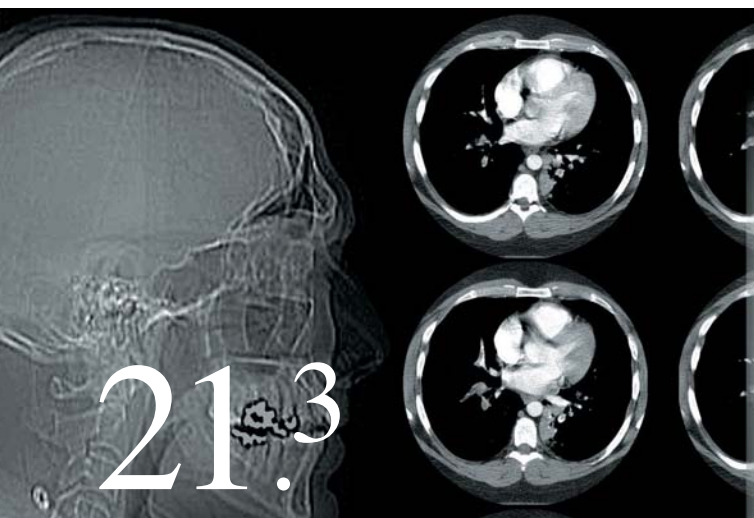
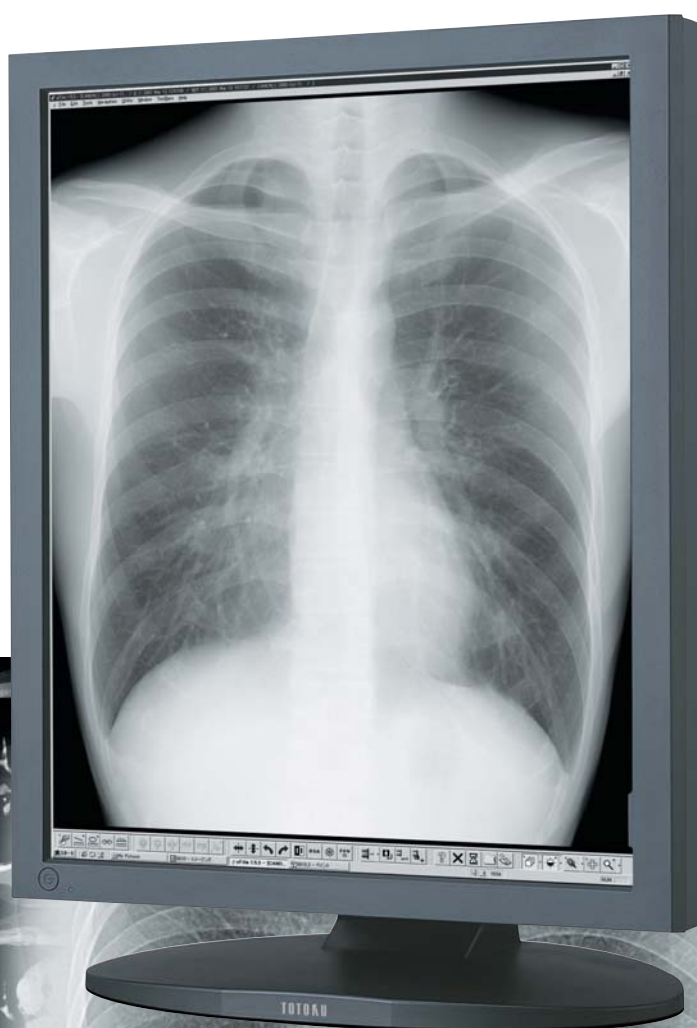
Contrast  
800:1

11-bit  
display

VESA  
mounting



Flat Display Systems  
for  
Medical Imaging



# 21.3"

Medivisor® 

## Flat Display Systems for Medical Imaging

TOTOKU's ME511L combines ultra-high resolution, contrast ratio and brightness in a new 5 megapixel monochrome LCD.

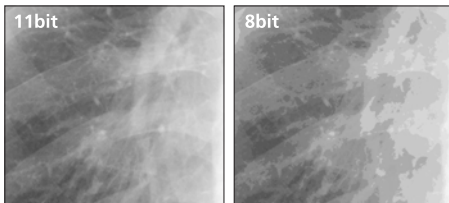


### 5mega pixel, super high-resolution, monochrome LCD

A large (21.3") super high-resolution monochrome LCD panel provides fine images of 2560 x 2048 pixels. Clear images with high luminance and contrast (maximum luminance: 750 cd/m<sup>2</sup>, contrast: 800:1) are displayed.

### 11 bit displayable grayscale

Up to 2048 (11-bit) shades of gray are displayable from a palette of 3826 (11.9 bits) using a proprietary driving algorithm. This permits a more accurate image to be displayed for critical diagnostic work.



\*The images shown are for illustrative purposes.

### Gamma data is stored in the display

Gamma curve data is stored within the display during calibration. This enables smooth grayscale display that is independent of the graphics card. The display is compatible with DICOM Part 14 standard<sup>\*1</sup> and other gamma curves.

<sup>\*1</sup> DICOM Part14: Standards for grayscale standard display function on digital images and communications for medical purposes

### Calibration kit (optional)

Included software (Medivisor Grayscale) and the calibration kit (luminance sensor and fittings) can correct luminance and gamma.

### Structure

- Sturdy base allows for height and tilting adjustment.
- VESA mounting points for arm or wall mount capabilities. (The attaching part meets the VESA standard<sup>\*2</sup>.)
- Optional AR protective filter "MF003" protects the liquid crystal panel from damage due to minor impact.
- Slim bezel for optimum viewing of multi-display installations.

<sup>\*2</sup> VESA: Abbreviation of Video Electronics Standards Association. The association determines standards concerning displays.

### Compliance with standards

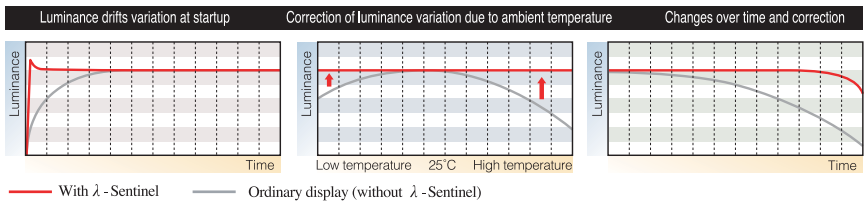
- The display is certified to UL, CSA, and TÜV medical standards.



### λ-Sentinel

### Built-in luminance stabilizing circuit

The λ-Sentinel brings the backlight to the preset (calibrated) luminance within seconds and keeps it there with a multisensor, feedback control circuit, thereby maintaining calibration through backlight aging and temperature variations.



### Hardware pivot function

ME511L comes standard with a hardware pivot function. When used in conjunction with a TOTOKU graphics card, high speed operation is achieved in either landscape or portrait orientation.

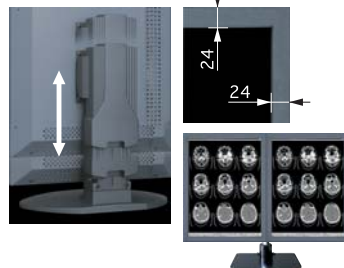


Graphics card

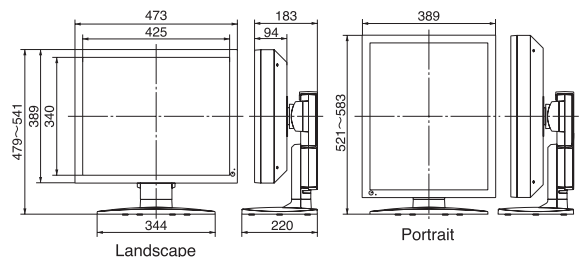
### Color/monochrome conversion function

Because of the color/monochrome conversion function, clear monochrome images can be displayed on a system that handles color video signals. A multi-monitor is possible by using color displays.

## Medivisor® Grayscale



Model name	ME511L/C (clear base), ME511L/B (blue base)
LCD panel	21.3" TFT monochrome LCD Viewing angle 170° (vertically and horizontally) Contrast 800:1
Screen display size	Horizontal: 422.4mm, vertical: 337.9mm (when used width wise)
Input signal	Digital: In conformity with DVI Rev 1.0 Connector: DVI-D
Resolution	640 x 480 (VGA), 2560 x 2048 (QXGA)
Grayscale display	3826-step gradation to 256 gradation display When linked with Viewer, simultaneous display of 11bit(2048) grayscale is possible.
Maximum luminance (typical)	750 cd/m <sup>2</sup> (410 cd/m <sup>2</sup> when using calibration)
Safety standards	Medical Safety: UL2601-1, CSA C22.2 No.601.1, MDD/CE, TÜV/GM, FDA510(K) EMC: FCC-A, VCCI-A, BSMI, MIC
Dimensions (including the tilting base)	Landscape: 473(W) x 479-541(H) x 220(D)mm Portrait: 389(W) x 521-583(H) x 220(D)mm
Weight	Appr. 12.4 kg
Input power supply	AC100-240 V 50/60 Hz
Power consumption	80 W Typical (with power management feature)
Calibration control	Luminance, gamma (optional)
Tilting base	Tilting/swiveling base with a vertically/horizontally rotating feature
Other features	DDC2B, RS232C, USB hub
Accessories	AC adapter, power cord, operation manual, DVI cable, serial cable, CD-ROM (Medivisor Grayscale)



TOTOKU has obtained ISO14001 and ISO9001 certification which are international standards concerning environment management and quality control respectively.



## Safety precautions

To ensure safe use of the products, read the Operation Manual / Safety before using them.

Do not install the products in areas where they may be affected by water, dust, humidity, or oily smoke. Storing the products in such conditions could cause a fire, equipment failure or electrical shock.

# TOTOKU

**TOTOKU** Sales Department MM Company Totoku Electric Co., Ltd.

1-3-21 Okubo, Shinjuku-ku, Tokyo 169-8543 TEL: +81 3-5273-2022 FAX: +81 3-5273-2091  
\*Osaka Branch: +81 6-6352-3541 \*Nagoya Branch: +81 52-771-1161 \*Shinetsu Branch: +81 268-34-5285

**USA**  
TOTOKU NORTH AMERICA, INC.  
1425 Greenway Dr., Ste. 565  
Irving, Tx 75038, U.S.A.  
TEL: +1-469-442-0112  
E-mail: info@totoku-na.com

**EUROPE**  
TOTOKU ELECTRIC CO., LTD.  
Jakob-Krebs-Str. 124  
D-47877 Willich-Anrath Germany  
TEL: +49-2156-4918-0  
E-mail: info@totoku.de

**ASIA**  
TOTOKU ELECTRIC CO., LTD.  
3-21, Okubo-1 Chome  
Shinjuku-ku, Tokyo, Japan  
TEL: +81-3-5273-2053  
E-mail: mmc@totoku.co.jp

Current and updated information is provided on the Internet at: <http://www.totoku.co.jp/dp/>

\*Microsoft and Windows are trademarks of the US Microsoft Corporation and are registered in the US and other countries. \*Company names and product names are the trademarks or registered trademarks of the respective companies. \*Product specifications and appearance are subject to change without notice. \*Colors in photographs may differ from actual colors due to the printing process. \*Images on screens are simulated.

Please contact the distributor below with inquiries and orders.